



Installation Guide for 22-Up Toyota TUNDRA | SEQUOIA equipped with Stock LED Projector headlights

ALPHAREX specializes in designing and producing superior and uniquely stylish aftermarket automotive performance lighting with unrivalled innovative technology. This installation guide takes you through the step-by-step process of installing your new **ALPHAREX HEADLIGHTS** for your 2022-Up Toyota TUNDRA | SEQUOIA **NOTE:** Installation of the provided DRL harness is **REQUIRED** for achieving the intended functionality of the daytime running lights (DRLs) and AlphaRex's signature activation sequence. **DO NOT USE DIELECTRIC GREASE!**



ATTENTION: Do not start the ignition with the grille unplugged. Doing so will cause the Check Engine Light to come on.



Table of Contents



NOVA-Series
LED Headlights



LUXX-Series
LED Headlights

PART I REMOVE HEADLIGHTS

- **INSTALLATION TOOLS**
- **STEP 1.** Disconnecting the negative battery terminal
- **STEP 2.** Remove the front grille and the bumper
- **STEP 3.** Remove the headlight bolts
- **STEP 4.** Remove the headlights
- **STEP 5.** Converter Installation & Preparation

PART II INSTALL HEADLIGHTS

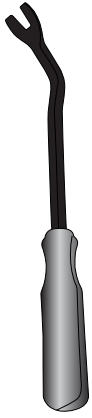
- **STEP 1.** Tap the fuses and route the DRL harness
- **STEP 2.** Screw the headlights bolts
- **STEP 3.** Test the headlight functions
- **STEP 4.** Adjust headlight level
- **STEP 5.** Complete installation

Disclaimer: This installation article is a tutorial guide. By reading this article, you agree it is for reference only and AlphaRex USA and its distributors make no guarantee on the finished results. Under no circumstances whatsoever shall AlphaRex USA nor its distributors be liable for any damage, misuse or personal injuries. If you do not fully understand the installation procedure, it is highly recommended that you seek help from professional mechanics to do the installation.

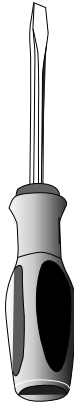
PART I REMOVE HEADLIGHTS

INSTALLATION TOOLS

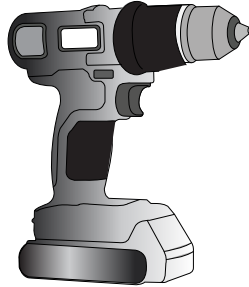
PREPARE THESE TOOLS FOR INSTALLATION



Metal Panel Popper



Flat Screwdriver



Power Tool



1/4 Ratchet



1/4 Extension

10mm



Socket

NOTE: Whenever using a power tool, please make sure do not overtighten the bolts.

STEP 1. DISCONNECTING THE NEGATIVE BATTERY TERMINAL

Whenever working on your vehicle, always start by disconnecting the negative battery terminal.



STEP 2. REMOVE THE FRONT GRILLE AND THE BUMPER

Remove the 4 X 10mm bolts and 2 mounting taps on the upper part of the front grille.

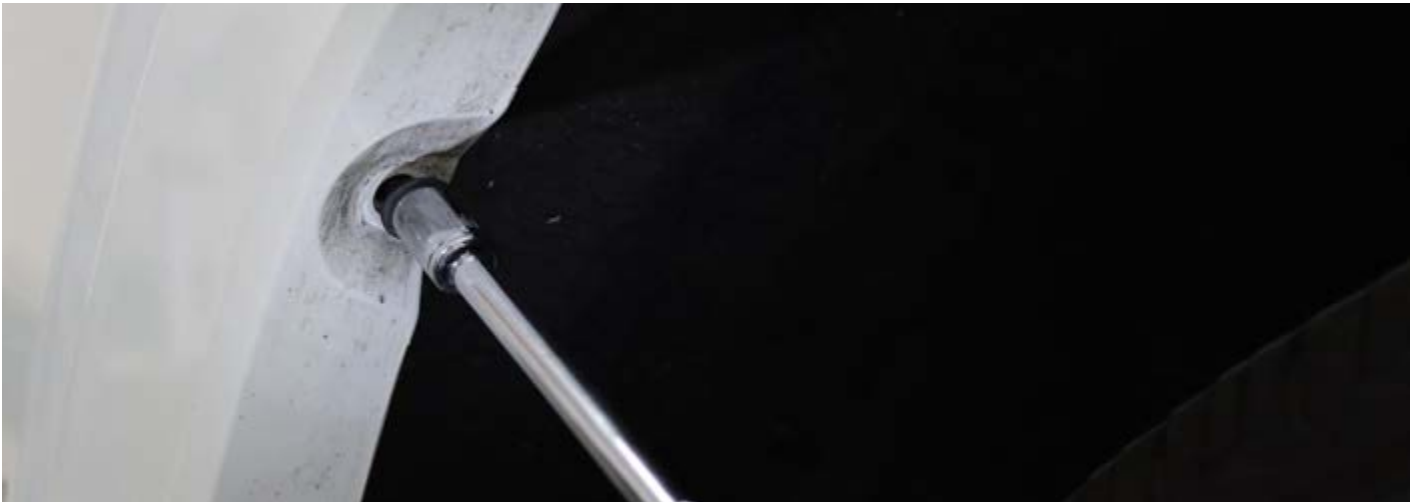


Unplug the sockets from the grille.



Remove 4 X 10mm bolts from each side of the front wheel well.





Use the panel popper to help you disengage the fender liner from the mounting. Gently pull it outward to get loose and until you see the bumper's side mount plastic clip.



Follow the same steps for the other side.



Use the extension to remove the 4 X 10mm bolts from the bottom of the front grille.



Next, remove the 4 X 10mm bolts from under the front bumper.



Gently pull the side of the bumper outward to disengage.
Follow the same step for the other side of the front bumper.



To remove the whole front bumper, gently pull the grille and the front bumper outward to disengage and release from all of the mounting clips. Set it aside for later re-installation.



STEP 3. REMOVE THE HEADLIGHT BOLTS

Remove the 4 X 10mm bolts from the headlight assembly.
Follow the same steps for the other side.



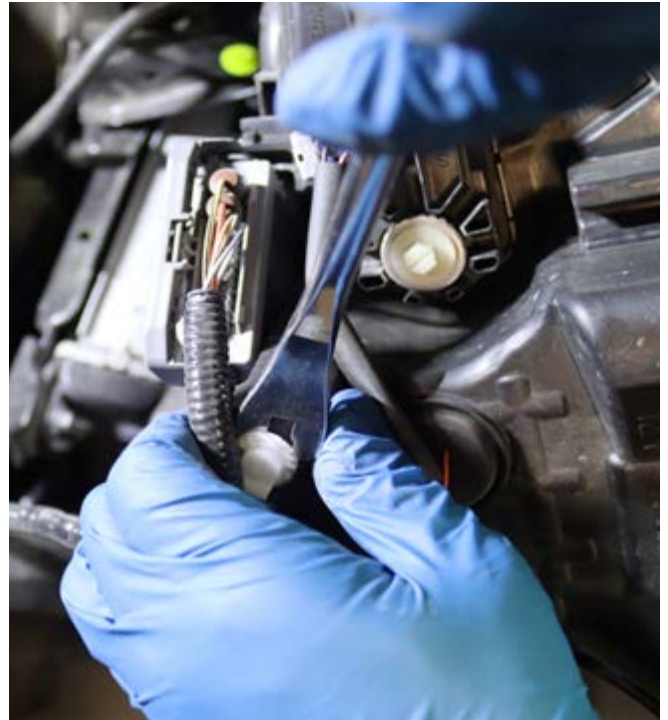


STEP 4. REMOVE THE HEADLIGHTS

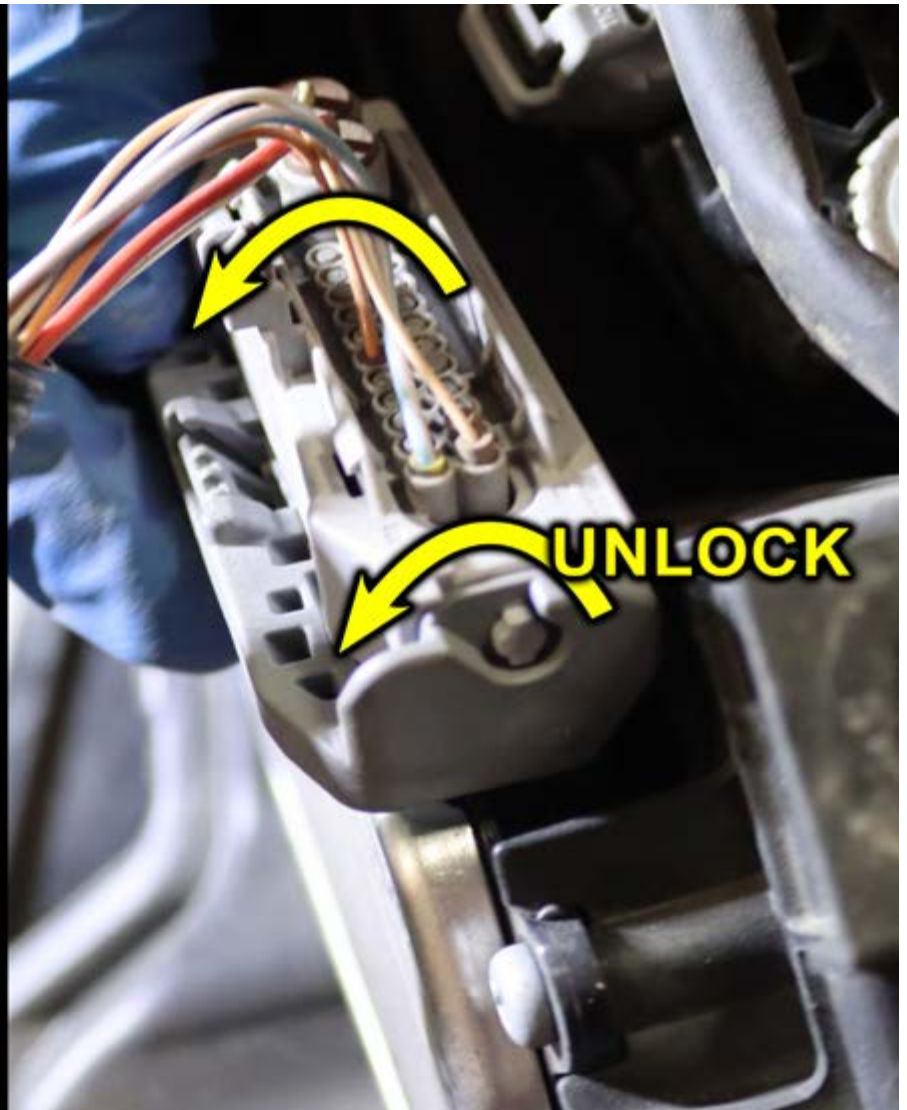
Gently pull the headlight assembly outward to disengage.
Unplug the headlight's sockets to complete the headlight's removal.



Utilize the panel popper to assist in detaching the headlight connector mount.



Detach the headlight connector by unlocking the plastic mechanism.



Detach the headlight connector by gently pulling it upward.



Follow the same steps to remove the other side of the headlight.





STEP 5. CONVERTER INSTALLATION & PREPARATION

Given the wide range of trim/models available for the newest 22+ Toyota TUNDRA | SEQUOIA it is crucial to choose the appropriate Converter for installing the new ALPHAREX headlights.

For 22+ TUNDRA | SEQUOIA equipped with Stock LED Projector Headlights

MUST INSTALL THE CONVERTER with SKU# 810030

To ensure a successful installation, follow these steps to install the converter plugs correctly for your new ALPHAREX headlights.

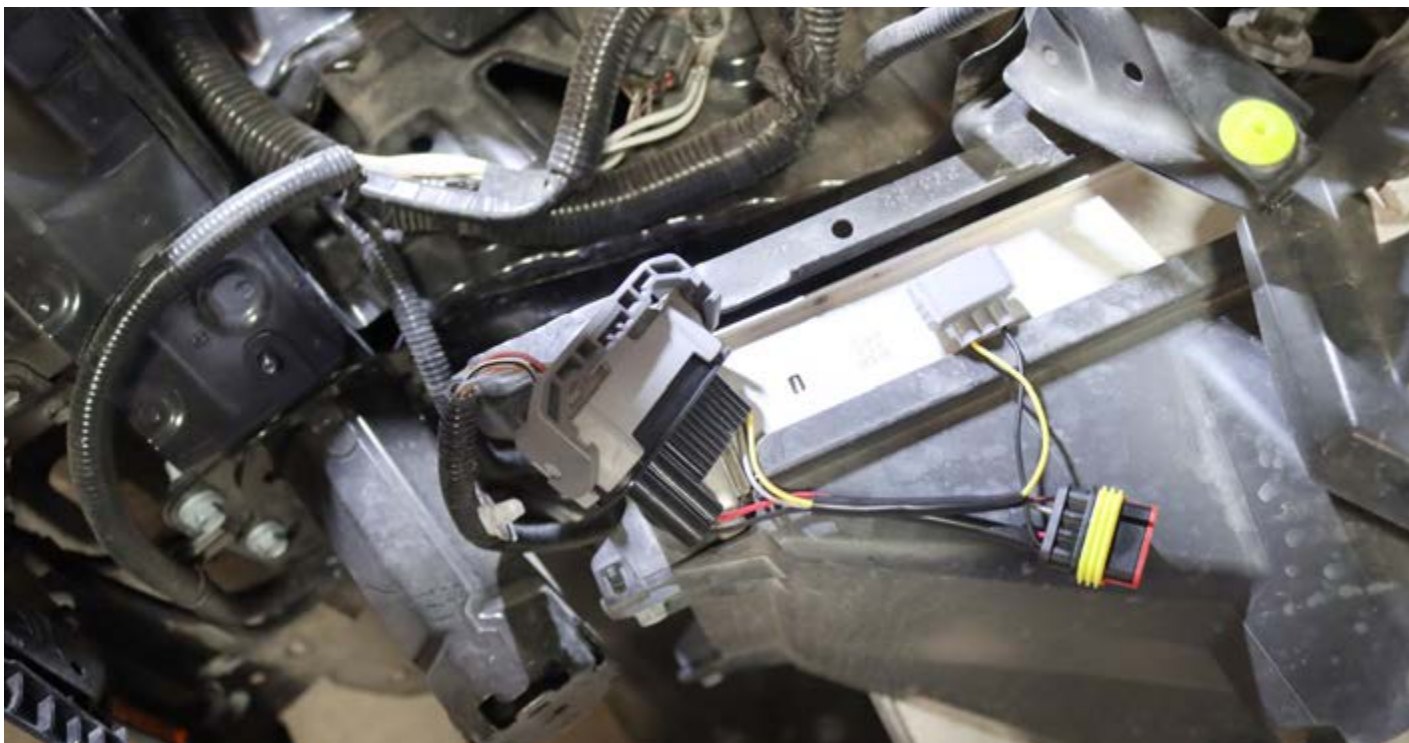


Securely attach the headlight connector to the ALPHAREX Headlight converter.
DO NOT USE DIELECTRIC GREASE!

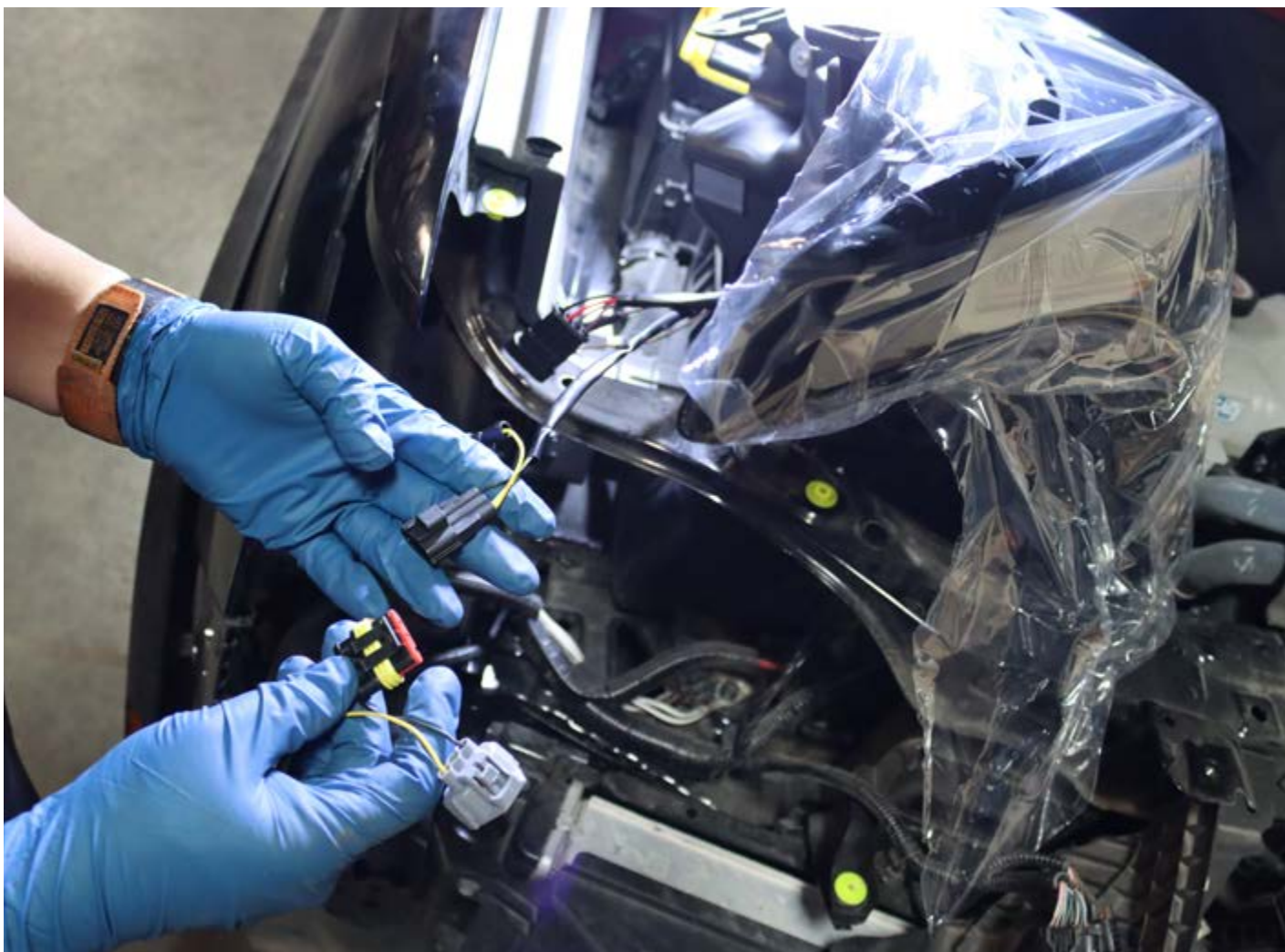


Ensure a secure connection by firmly locking it in place with the plastic mechanism.





Complete the installation by plugging in both the turn signal connector and the headlight connector into the new ALPHAREX headlight assembly. Follow the same steps for the other side of the headlight. **DO NOT USE DIELECTRIC GREASE!**





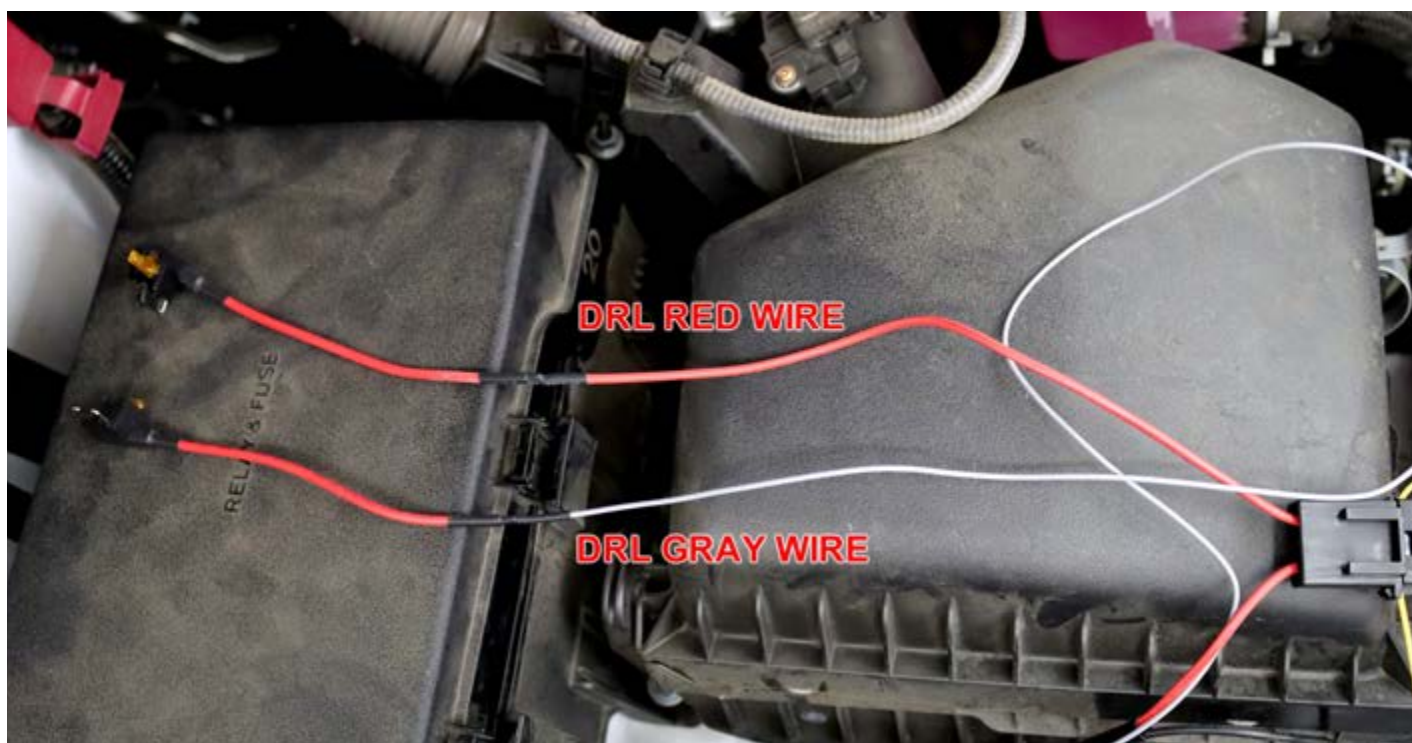
PART II INSTALL HEADLIGHTS



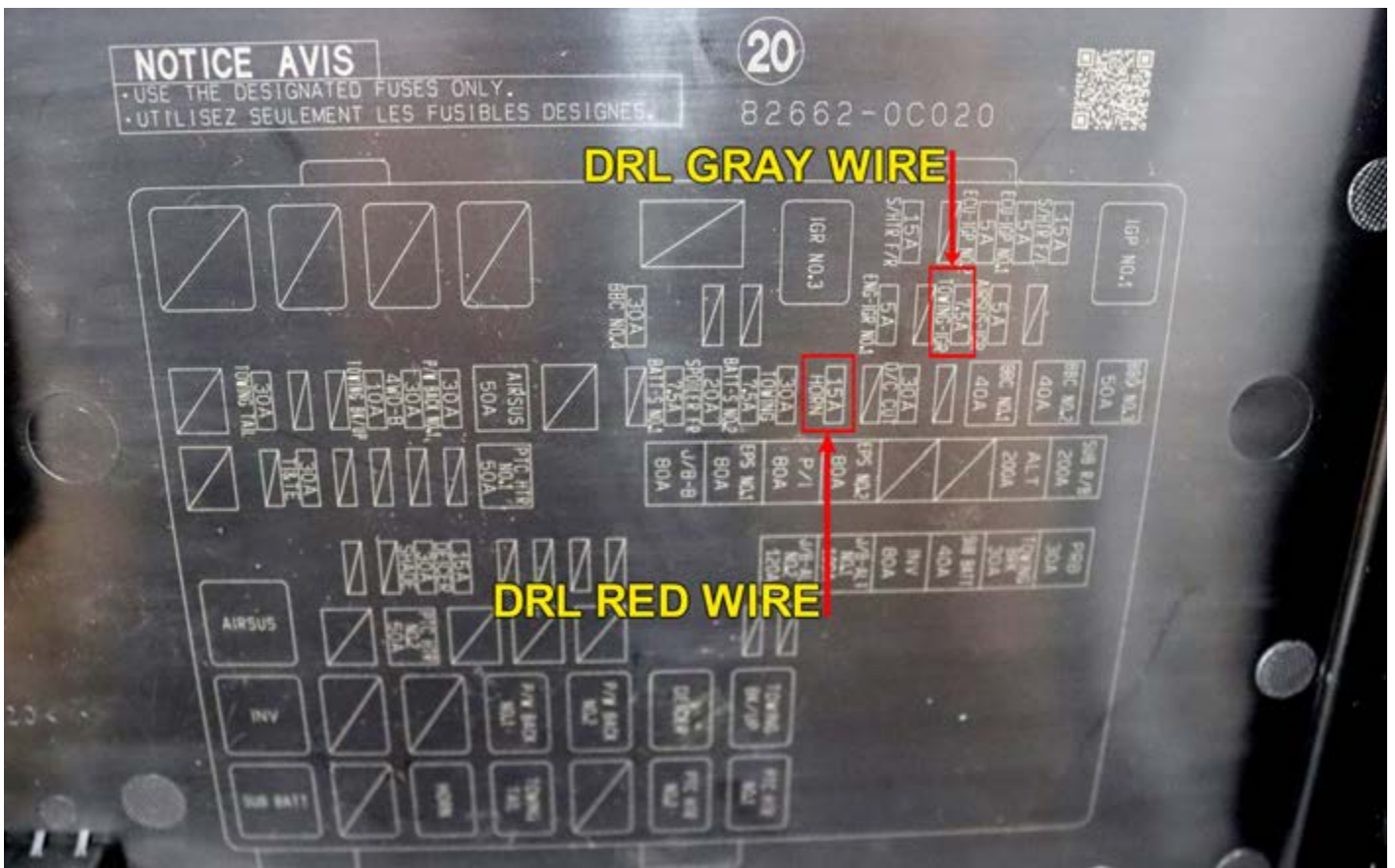
Installation of the provided DRL harness is **REQUIRED** for achieving the intended functionality of the daytime running lights (DRLs) and Alpharex's signature activation sequence.

STEP 1. TAP THE FUSES AND ROUTE THE DRL HARNESS

In order for the DRL to function properly, you will need to tap the fuses and route the harness.



First, locate the Fuse box from the passenger's side engine bay and open the cover.



Tap the **DRL RED WIRE** to the 15A (Horn fuse)



Tap the **DRL GRAY WIRE** to the 7.5A (Towing-IGR fuse)



Connect the black wire to the (-) Negative battery terminal.

ATTENTION: Do not start the ignition with the grille unplugged.
Doing so will cause the Check Engine Light to come on!



Close the fuse box cover and start routing the rest of the DRL wire to the Driver's side headlight.



STEP 2. SCREW THE HEADLIGHTS BOLTS

Align the mounting points on the headlight with the corresponding points on the truck.



Screw the bolts into place securely, ensuring a proper fit.



To complete the installation, reverse the uninstallation process, ensuring all previous steps are followed in the opposite order.



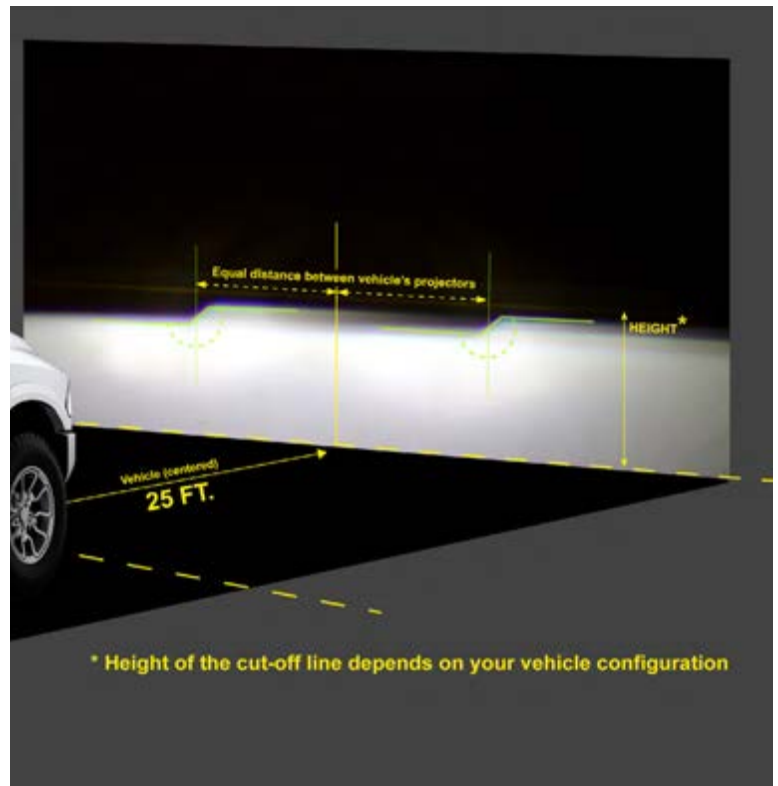
STEP 3. TEST THE HEADLIGHT FUNCTIONS

Test the functions of your ALPHAREX headlights to ensure everything works properly.



STEP 4. ADJUST HEADLIGHT LEVEL

Once everything has been tested, aim your ALPHAREX headlights by parking 25ft from a wall and level the headlight evenly.



STEP 5. COMPLETE INSTALLATION

Congratulations! You have completed the installation for ALPHAREX 22-Up Toyota TUNDRA | SEQUOIA HEADLIGHTS. **FOR VEHICLE EQUIPPED WITH STOCK LED PROJECTOR HEADLIGHTS**

